



Preparing Families for the First Day of School

Presented by NYC DHS, NYC DOE, NYC ACS, & NYS-TEACHS



Who we are

- ▶ **Department of Homeless Services, Office of Public/Private Partnerships**
 - ▶ Provides resources and supports to shelter staff and collaborates with the Office of Family Services, which provides direct services to clients residing in temporary emergency shelter (families with children and pregnant women)
- ▶ **Department of Education's Students in Temporary Housing (STH)**
 - ▶ Unit within the Office of Safety and Youth Development
 - ▶ Provides technical assistance and works directly with schools and students in temporary housing, including those in shelters
 - ▶ Provides services students are entitled to under the McKinney-Vento Act and Chancellor's Regulation A-780
- ▶ **Administration for Children's Services, Division of Early Care and Education (ECE)**
 - ▶ Administers NYC's subsidized early care and education system including EarlyLearn NYC, which provides quality early education services to eligible children ages 6 weeks to 4 years old in center and family child care settings. EarlyLearn NYC includes subsidized child care, Head Start and Pre-K.
 - ▶ Eligible families with children ages 6 weeks to 13 years old can be issued vouchers to purchase childcare from providers in the City.
- ▶ **NYS-TEACHS**
 - ▶ Funded by the State Education Department and housed at Advocates for Children
 - ▶ Provides technical assistance on homeless education issues. Services include: hotline (800-388-2014), website (nysteachs.org), webinars, workshops, and trainings

Today's Agenda

- ▶ Resources to help shelter staff with preparing families for back to school:
 - ▶ Enrollment
 - ▶ Busing
 - ▶ MetroCards
 - ▶ School Supplies
 - ▶ Clothing
- ▶ How to request an education shelter transfer
- ▶ How to connect children with pre-k or EarlyLearn
- ▶ How to connect older youth with alternative educational programs
- ▶ Collaborative strategies for DOE and shelter staff, which are critical to children's success in school.



▶ 3

Before we get started...

▶ 4

Partnerships with DOE

Share Information with Parents about:

- Enrollment Workshops and Trainings (by borough on DOE webpage)
- Middle School and High School Directories (available in many languages)



DOE Citywide High School Fair

- Encourage 8th graders and their parents to attend a fair!
- **When:** Saturday, September 16 & 17
10am-3pm
- **Where:** Brooklyn Technical High School
29 Fort Green Place,
Brooklyn, NY 11217

▶ 5

Outcomes for Students in Temporary Housing:

Students Testing Proficient in NYC, 2014-15

STUDENTS IN GRADES
3-8 PROFICIENT IN
READING



30%
ALL
STUDENTS

vs.

14%
STUDENTS in
TEMPORARY
HOUSING

STUDENTS IN GRADES
3-8 PROFICIENT IN
MATH



35%
ALL
STUDENTS

vs.

18%
STUDENTS in
TEMPORARY
HOUSING

▶ 6

Back to School Checklist



Step 1: Confirm School Enrollment and Talk about School Options



Step 2: Talk about School Stability



Step 3: Confirm Transportation



Step 4: Make a Connection if transferring schools



Step 5: School Supplies and Clothes

▶ 7

Step 1: Confirm School Enrollment and Talk about School Options



Stay in the same school and get free transportation

-Or-

Immediately enroll in local school

▶ 8

Step 2: Talk about School Stability

- Let parents know that **SCHOOL STABILITY IS IMPORTANT!**
- **Students who stay in their same school do better** academically and socially/emotionally.
- Having the same **friends, counselors, teachers**, aides, coach, and principal can **help students better cope** with having lost their housing.



▶ 9

Fill in the blank:

Students who transfer schools frequently are _____ times more likely to repeat a grade than their peers.

▶ 10

Outcomes for Students in Temporary Housing: School Transfers and Absences in NYC, 2014-15



Over
1 in 5

students in temporary housing
**transferred schools at least
once** in the school year.

RATE OF CHRONIC ABSENTEEISM
(missing 20 or more days of school)
ELEMENTARY SCHOOL

57%

CHILDREN IN
SHELTER

16%

PERMANENTLY
HOUSED
CHILDREN

▶ 11

Shelter Transfers

- ▶ Tell clients that they can ask for a shelter transfer based on school needs.
 - ▶ Shelter transfers are not guaranteed (based on capacity)
 - ▶ Depends on approval from Program Administrator & vacancies
 - ▶ Dept of Education and DHS collaborate to escalate urgent cases

- ▶ How do you request a shelter transfer?



- ▶ There is **NO** form. The shelter staff should email request to Program Administrator. Include reasons for transfer in email. For example:
 - ▶ Parent has to travel over an hour each way to get kids to school which prevents her from looking for perm housing. Kids are very attached to their teachers, and family wants the children to stay in same school.

▶ 12

Step 3: Confirm Transportation



- For all students K-6
- For any grade if on IEP



- FREE full-fare MetroCard for any student who is not getting busing
- FREE MetroCard for parent to go with student (pre-k - 6) to/from school

▶ 13

Transportation, cont'd

- ▶ **Students K-6 in shelter before Aug. 7 will be routed for first day of school on Sept. 7**
 - ▶ **Shelter directors** will be given route information by **September 1** and will be **responsible for sharing route information with parents.**
 - ▶ STH Content Experts and STH Family Assistants will also have route information by Sept 1
 - ▶ Parents can also get route information by:
 - Calling OPT Customer Service (718) 392-8855
 - Visiting <http://www.optnyc.org> (parents will need their child's school ID number)
 - ▶ Students K-6 who enter shelter after Aug. 8 will still be routed for busing but may not be in place for first day of school.
 - ▶ While busing is being routed, parents and students can get MetroCards from STH Content Experts or STH Family Assistants.

▶ 14

Transportation for Students w/Busing on their IEPs

- ▶ If the student has an IEP and the IEP includes door-to-door transportation:
 - ▶ The student will NOT be automatically re-routed for busing.
 - ▶ **The parent must ask the school to update student's address in ATS.**
 - ▶ After the address is updated by the school, busing will be re-routed, typically within a couple weeks.
- ▶ While busing is being re-routed, parents and students can get MetroCards from STH Content Experts or STH Family Assistants.
- ▶ If families can't use MetroCards while busing is being re-routed:
 - ▶ Families may be able to get reimbursed for car fare:
<http://schools.nyc.gov/Academics/SpecialEducation/Supports/Services/RelatedServices/default.htm>.
 - ▶ For help, call NYS-TEACHS 800-388-2014



▶ 15

Who can help?

- ▶ **Call OPT Customer Service
(718) 392-8855**
- ▶ Check online at <http://www.optnyc.org>.
 - ▶ You will need the child's ID number and date of birth.
- ▶ Still have questions, call:
 - ▶ STH Content Experts or Family Assistants
 - ▶ NYS-TEACHS (800) 388-2014

▶ 16

Jessica



▶ 17

**What type of transportation
will Jessica receive?**

▶ 18

Step 4: Make a Connection



Where parents can go to enroll or transfer schools?

Grades K-8

- Go to the **ZONED SCHOOL**
- Call **311** or visit:
<http://schools.nyc.gov/schoolsearch/>

High School or no zoned school

- Go to the **FAMILY WELCOME CENTERS**
- Call **311** or visit:
<http://schools.nyc.gov/choicesenrollment/newstudents/welcomecenters/default.htm>

District 75 Citywide Special Education

- Call the **District 75 Borough Placement Officer: 212-802-1500**

▶ 19

Over-age and Under-Credited?

Middle School

- For information about option for students in middle school who have been held back at least once, visit:
<http://tinyurl.com/overage-mdl-sch>

Transfer Schools & Young Adult Borough Centers (YABC's)

- Visit <http://tinyurl.com/NYC-transferHS>

High School Equivalency (formerly GED)

- Call the **Referral Center Hotline: 718-577-2525**
- Visit <http://pathograd.org/>

Jobs & Internships

- Visit: <https://www1.nyc.gov/site/dycd/services/jobs-internships.page>

▶ 20

Don't forget enrolling young children in preschool!

Did you know?

- ▶ Access to preschool is key to future educational success, especially for children in high-need communities
- ▶ Children who don't attend preschool often start kindergarten at a disadvantage
- ▶ Children who attend high-quality preschool not only do better in school than those children who didn't but they also are more likely to graduate, go on to hold job, and earn more.



▶ 21

Pre-K for All, EarlyLearn, and Head Start

To find the closest early childhood education programs in your neighborhood:

- ▶ Call 311 or the Child Care Resource and Referral Consortium at **(888) 469-5999**
- ▶ Or Visit:
 - ▶ <http://schools.nyc.gov/prek> for information about pre-k in public schools and community-based early childhood centers
 - ▶ http://www.nyc.gov/html/acs/html/child_care/earlylearn.shtml for information about EarlyLearn NYC programs.
 - ▶ <http://eclkc.ohs.acf.hhs.gov/hslc/HeadStartOffices#map-home> for information about Head Start programs.



▶ 22

Step 5: School Supplies and Clothes

▶ School Supplies

- ▶ Most shelters will receive backpacks and school supplies.
- ▶ If a shelter doesn't get backpacks, refer parent to DOE Family Assistant or Content Expert.



▶ Clothes/Uniforms

- ▶ Free clothing:
http://www.informationforfamilies.org/Theres_No_Place_Like_Home/Clothing.html
- ▶ Schools with uniforms: If family needs help getting a uniform, refer the parent to the school. They should be able to purchase a uniform for the student using Title I set-aside funds.
- ▶ Schools cannot turn students away even if they aren't wearing a uniform.

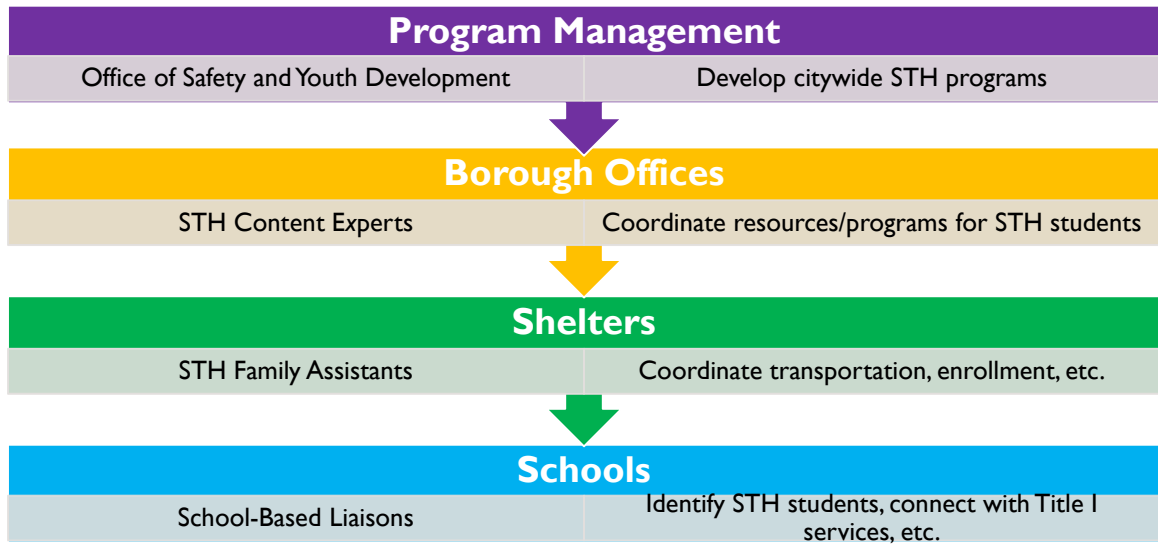


▶ 23

Where to get help?

▶ 24

DOE Students in Temporary Housing (STH) Program



▶ 25

Student in Temporary Housing (STH) Content Experts

OSYD Borough Center Location	Districts	STH Content Expert Name	Office Number	E-mail
Bronx 1 Fordham Plz, Rm 816, Bronx, NY 10458	7, 8, 9, 10, 11, 12	Stephanie Dyer Rebekha Askew	718-741-7783 718-828-2139	sdyer@schools.nyc.gov raskew2@schools.nyc.gov
Brooklyn North 131 Livingston St, 4 th Fl, Brooklyn, NY 11201	13, 14, 15, 16, 19, 23, 32	Tony Davis Wayne Harris	718-935-3296 718-935-3562	tdavis47@schools.nyc.gov wharris22@schools.nyc.gov
Brooklyn South/SI 1780 Ocean Ave., Rm 1B, Brooklyn, NY 11230	17, 18, 20, 21, 22, 31	Charlene Mitchell	718-758-7722	cmitchell4@schools.nyc.gov
Manhattan 333 7th Avenue, 7th Fl, New York, NY 10001	1, 2, 3, 4, 5, 6	Cecilio (Bo) Diaz Iris Gersten	917-339-1698 917-339-1718	cdiaz@schools.nyc.gov igersten@schools.nyc.gov
Queens 28-11 Queens Plaza N, LIC, NY 11101	24, 25, 26, 27, 28, 29, 30	Linda Wilson-Animashaun Shaquieta Boyd	718-391-6849 718-391-6843	lwilson33@schools.nyc.gov sboyd5@schools.nyc.gov
Special Education 400 First Ave, Rm 113, New York, NY 10010	75	Michele Marcel Joan Boreland	212-802-1579 917-256-4262	mmarcel@schools.nyc.gov jboreland@schools.nyc.gov

STH Program website with other resources (Housing Questionnaire, McKinney-Vento Guide for Parents, etc.):

<http://schools.nyc.gov/StudentSupport/NonAcademicSupport/StudentsinTemporaryHousing/default.htm>

▶ 26

- ▶ Toll-free hotline **800-388-2014**
- ▶ Free brochures are available in English and in Spanish
- ▶ Free posters in 10 languages
- ▶ Website, www.nysteachs.org



▶ 27

Best Practices

Collaboration is the Key!



▶ 28

What can shelter staff do to help children in shelters succeed in school?

Build a community that rewards academic achievement by:

▶ Sharing Resources:

- ▶ Provide space for after-school activities and homework
- ▶ Make internet, phone, and office space available to DOE Family Assistant

▶ Improving Communication:

- ▶ Invite DOE Family Assistant to attend shelter staff meetings/case conferencing meetings (for example, to help address attendance issues).
- ▶ Ensure that DOE staff are informed of upcoming shelter transfers or moves into permanent housing so that they can help minimize any disruption to the child's education.
- ▶ Consult with DOE Family Assistant or STH Content Expert when child has an enrollment issue, MetroCard or busing issue, several school absences, or a suspension

▶ 29

What can shelter staff do to help children in shelters succeed in school?

▶ Improving Attendance:

- ▶ Help **distribute MetroCards** for parents to take children to school when DOE Family Assistant not at the shelter.
- ▶ Establish **daily check-in system** onsite at shelter to ensure that students who may not have left for school on time are sent to school for remainder of the day.
- ▶ Discuss **attendance reports** and what shelter staff and STH program staff can do to improve attendance for students who are frequently absent.
- ▶ **Ensure that parents don't keep kids out of school** when the parent has appointments. For example, if the parent has a meeting at PATH, shelter caseworker may call to ask if appointment can be scheduled early enough for parent to pick up kids from school.
- ▶ **Celebrate students who regularly go to school** and are doing well with treats, awards, or special ceremonies.

▶ 30

Back to School Checklist:

- ✓ Families in my facility are aware of school options and importance of school stability
 - ✓ All children in my facility are registered in school
 - ▶ Young children referred to preschool
 - ▶ Older youth who are out of school referred to Family Welcome Center, District 79 Referral Center, or transfer high school
 - ✓ My staff are working the STH Content Expert to make sure that all children in my facility have a MetroCard or busing by the start of school on September 7th
 - ✓ All children in my facility have school supplies and clothes
 - ✓ My staff are working with the DOE to promote educational events (for example, High School Fairs)
-

▶ 31

Questions?

▶ 32

Thank You!

NYC Department of Homeless Services

Office of Public/Private Partnerships

Susana Vilardell, Director of Educational Services

svilardell@dhs.nyc.gov

Tel: (212) 607-2407

NYC Administration for Children's Services

Division of Early Care and Education

Shari Gruber, Executive Director, Policy and Procedure

shari.gruber@acs.nyc.gov

(212) 393-5109

The slides from today's webinar and other handouts can be found here:

<http://nysteachs.org/trainings/WebinarMaterials.html>

NYC Department of Education,

Students in Temporary Housing (STH) Program

Rebekha Askew, Bronx STH Content Expert

raskew2@schools.nyc.gov

Tel: (718) 828-2139

Website:

[http://schools.nyc.gov/StudentSupport/](http://schools.nyc.gov/StudentSupport/NonAcademicSupport/StudentsinTemporaryHousing/default.htm)

[NonAcademicSupport/StudentsinTemporary](http://schools.nyc.gov/StudentSupport/StudentsinTemporaryHousing/default.htm)

[Housing/default.htm](http://schools.nyc.gov/StudentSupport/StudentsinTemporaryHousing/default.htm)

NYS-TEACHS

Jennifer Pringle, Director

jpringle@afcnyc.org

Hotline: (800) 388-2014

Website: www.nysteachs.org