



# McKinney-Vento Data Collection and Reporting

Presented by: Office of Information and Reporting Services, NYSED & New York State Technical and Education Assistance Center for Homeless Students (NYS-TEACHS)

## About Us

### NYS-TEACHS

- New York State Technical and Education Assistance Center for Homeless Students
- Funded by the New York State Education Department and housed at Advocates for Children of New York
- Provide technical assistance on homeless education issues. Our services include:
  - Hotline (800-388-2014)
  - Website ([www.nysteachs.org](http://www.nysteachs.org))
  - Webinars, Annual Workshops, and On-Site Trainings
  - Outreach Materials

# About Us

## Office of Information and Reporting Services

- Student Information Repository System (SIRS)
- BEDS Institutional Master File (IMF)
- BEDS Personnel Master File (PMF)
- Violent and Disruptive Incident Reporting (VADIR)
- SEDREF- State Education Department Reference File
- Special Education Data Collection (PD series)
- Web Form Data Manager

## What do we already know?

**NYSED reports a point-in-time count of students experiencing homelessness in NYS on BEDS day.**

True or False?

- A. True
- B. False

## What do we already know?

The Level 2 Reasonableness Report may alert your LEA to problems with data entry/management.

True or False?

- A. True
- B. False

## What do we already know?

LEAs receiving McKinney-Vento grants have additional reporting requirements.

True or False?

- A. True
- B. False

## What do we already know?

Program Service Code 5566 (Homeless Education/McKinney-Vento) should only be entered for students served by McKinney-Vento grant funds.

True or False?

- A. True
- B. False

## What do we already know?

It is recommended that the McKinney-Vento Liaison set up a process to review homeless data with the district's Chief Information Officer/Data Coordinator.

True or False?

- A. True
- B. False

## Why is accurate data collection important?

- Alerts staff to students who may need additional assistance
- Identifies gaps and strengths in programming
- Valuable when developing program improvements and responding to issues
- Impacts funding
- Necessary for monitoring and audit visits
- Provides historical record
- Remember: Data pulled out are only as good as what are put in

## Best Practices

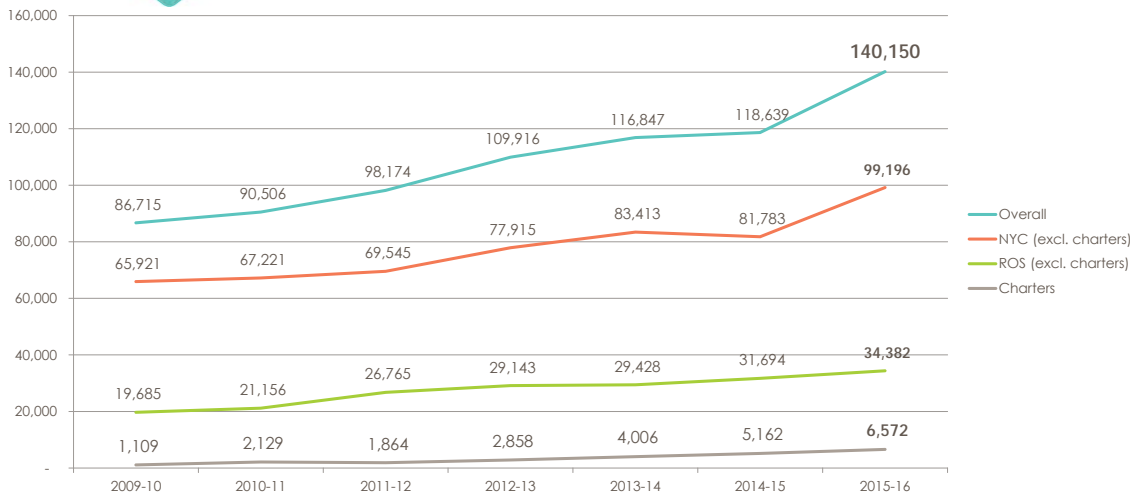
- Become familiar with:
  - The homeless data fields
  - What the different fields mean
  - Which systems collect which homeless data (SIRS, Annual Reports)
- Meet with your district's Data Coordinator/Chief Information Officer to talk about:
  - How homeless data is entered into the district's student management system
  - Who is responsible for entering and updating homeless data
  - Timelines for reporting and correcting homeless data
  - Whether reports could be generated to monitor the accuracy of the homeless data in the district's student management system

# Data on Students Experiencing Homelessness

- [www.nysteachs.org](http://www.nysteachs.org)
  - Data collected through SIRS and posted to NYS-TEACHS site. Data found at: Home > Info by Topic > Statistics
  - Identification numbers by LEA
  - Primary Nighttime Residences by County
  - Grade breakdowns by County
  
- [eddataexpress.ed.gov](http://eddataexpress.ed.gov)
  - Data collected by U.S. Education Department (based on SIRS data NYSED submits to U.S. Education Department)
  - Identification numbers for each state
  - Achievement data for students experiencing homelessness – Math, Reading, Science

NYS-TEACHS 800-388-2014

# Number of Students Experiencing Homelessness Has Increased Each Year



NYS-TEACHS - (800) 388-2014

SIRS data, unduplicated

# Topics

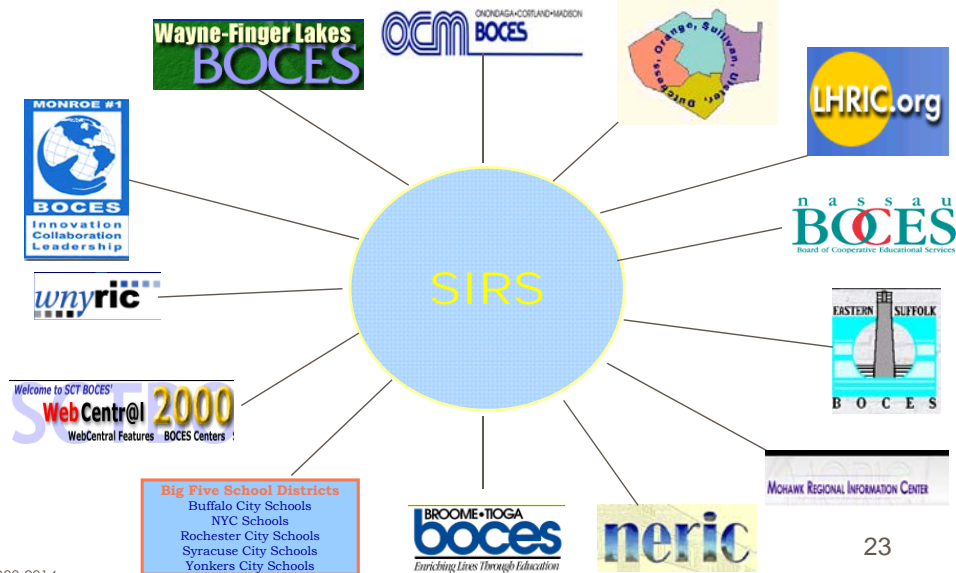
Data reporting in SIRS

Level 2 verification

Reporting for funded LEAs

Timeline for Reporting

## Student Information Repository System (SIRS) AKA the Data Warehouse



## SIRS: Pre-K – Grade 12 students

### 1. Student Demographics

- student name and id,
- gender,
- race/ethnicity,
- date of birth,
- home language,
- indicators for homeless, immigrant, neglected or delinquent

### 2. Enrollment

- starting and ending dates for each school
- the reason enrollment ended (graduated, dropped out, etc.)

### 3. Programs

- disability classification,
- LEP identification and programs,
- funding sources (Title I, III, X),
- CTE,
- free/reduced lunch,
- universal preK,
- homeless unaccompanied youth status

NYS-TEACHS 800-388-2014

24

## SIRS: PreK-Grade 12 students & teachers

### 4. Assessment

- NYS assessments (Regents, 3-8 ELA and mathematics, 4 and 8 science)
- NYSAA
- NYSESLAT
- approved alternatives for Regents credit

### 5. Special Education

### 6. Staff Student Course

- start and end dates of course enrollment,
- # of actual and intended instructional minutes
- Name of teacher providing instruction for students enrolled in courses that end with a NYS assessment

### 7. Staff

- information about teachers and administrators

NYS-TEACHS 800-388-2014

25



## SIRS: NCLB-funded Program Services

- Supplemental Educational Services (SES) for Schools in Improvement Status under Title I (5533)
- Applied for SES for Schools in Improvement Status under Title I (5577)
- Title I - Part A: Improving Basic Programs (other than 5533) (0286)
- Title I – Part A: Improving Basic Educational Services for School-wide Program (other than 5533) (0411)
- Title I - Part C: Education of Migratory Children (0330)
- Title I - Part D: Prevention and Intervention Programs for Children and Youth who are Delinquent (0187)
- Title I – Part D: Prevention and Intervention Programs for Children and Youth who are Neglected (8327)
- Title III: Services to Non-Immigrant LEP Students (5720)
- Title III: Language Instruction Immigrant LEP Students (5741)
- Title III - Part B, subpart 4: Emergency Immigration Education Program (5742)
- **Title X - Part C: Homeless Education/McKinney-Vento (5566)**

## Poll

**ALL students identified as homeless should have:**

*Check all that apply:*


- A. Y for Homeless Indicator
- B. A primary nighttime residence code
- C. Program Service Code 5566 (Title X – Part C: Homeless Education/McKinney-Vento)
- D. Program Service Code 8272 (Homeless Unaccompanied Youth Status)

## SIRS Codes that apply to *all* students identified as homeless under the McKinney-Vento Act

### Homeless Indicator

- **Y or N** (default is N)
- **Y** should be entered if the student experienced homelessness at any point during the school year.

### Primary Nighttime Residence

- **S** = Shelters
- **H** = Hotels/motels
- **D** = Doubled-up (with another family)
- **U** = Unsheltered (car, parks, campgrounds, temporary trailer, or abandoned buildings)
- **T** = Transitional Housing
- **A** = Awaiting Foster Care 

## SIRS Codes that apply to *some* students identified as homeless under the McKinney-Vento Act

### Unaccompanied Youth Status

- **Program Service Code 8272**
- Not in the physical custody of a parent or legal guardian
- Homeless under McKinney-Vento

### Served by McKinney-Vento Grant/Title X (Title X- Part C: Homeless Education/McKinney-Vento)

- **Program Service Code 5566**
- MV Grant Direct services
- Indirect services (e.g. services provided by staff member whose position is supported by M-V funding)

## Homeless vs. Served

Homeless  
Identification



Served by  
McKinney-Vento  
Grant  
(Title X – Part C:  
Homeless  
Education/  
McKinney-Vento)

## McKinney-Vento Grants

- 39 LEAs (school districts and BOCES) receive grants that serve a total of 138 LEAs
- Examples of Direct Services
  - Tutoring
  - Counseling
  - School supplies
- Examples of Indirect Services
  - Referrals or case management services from liaison whose salary is partially funded by grant

# Data Entry for Title I Set-Aside for Students Experiencing Homelessness

- If district has non-participating schools:
  - Set aside portion of Title I, Part A funding
  - Provision of services to students who are homeless
- What code should be used?
  - No specific set-aside code, choose applicable Title I code:
    - 5533: SES for Schools in Improvement Status under Title I
    - 5577: Applied for SES for Schools in Improvement Status
    - 0286: Improving Basic Programs (other than 5533)
    - 0411: Improving Basic Educational Services for School-wide Program (other than 5533)

## Poll

In SIRS, what should the district of residence be for a student identified as homeless?

Choose one:

- A. The student's district of origin
- B. The student's designated district of attendance
- C. The student's district of current location
- D. None – leave blank

# Data Verification in SIRS

How does a district verify that homeless data are correct?

**L2RPT** (Level 2 Report) is the State Education Department's verification reporting system

## Reasonableness Report

- shows counts of students reported for programs, demographics, enrollment for two years with **difference** and **rate change** to help districts identify reporting errors.
- Homeless indicator and primary nighttime residence appears under Demographic category,
- Title X, Part C and Homeless Unaccompanied Youth appear under Programs category.
- **BEDS Day Enrollment Report** shows indicator for students reported with homeless flag on student detail report.

# L2RPT Reasonableness Report

Homeless data may be reviewed in the Student Demographic and Programs categories of the Reasonableness Report

# L2RPT Reasonableness Report – Demographic Category

LOCATION\_NAME\_RSP\_SCH  
Student Demographic  
All SubTypes Finish

Date of Data Refresh: 5 May 2012

SubType	Code	Description	Last Year (A)	This Year (B)	Change (C) (B-A)	Percent Change (D) ((C/A)*100)
Homeless	0146	Homeless	2,271	2,506	235	11%
Homeless	A	Awaiting Foster Care	12	23	-7	-43%
Homeless	D	Doubled up (with another family)	882	923	192	24%
Homeless	H	Hotels/Hotels	36	30	-6	-17%
Homeless	S	Shelters	385	339	-26	-7%
Homeless	T	Transitional Housing	11	4	-7	-64%
Homeless	U	Unsheltered	20	9	-11	-55%
Other	DI	Immigrant	1,115	1,450	135	9%
Other	MG	Migrant	3	5	2	67%
Other	ND	Neglected or Delinquent	136	0	-136	100%

A Reasonableness Report is a data density or "red flag" report. The purpose of the report is to identify significant changes in data from year to year. The report provides 2010-11 (column A) and 2011-12 counts (column B), the difference between those counts (column C), and the percent change between those counts (column D) of students by various category types (i.e., enrollment entry code) by district.

Particular attention should be paid to percent changes equal to or greater than 10 and reporting issues known to have caused difficulties in previous years. For smaller districts, a 10 percent change may not be significant; for larger districts, a smaller percent change may be significant. Reporting issues known to cause difficulties include the failure to report students who are in the SIRS-401 in lieu of the SIRS-401 for accountability with a SIRS-401 enrollment entry code, the failure to report both the correct reason for program

NYS-TEACHS 800-388-2014

36

# L2RPT Reasonableness Report - Programs Category

SubType	Code	Description	Last Year (A)	This Year (B)	Change (C) (B-A)	Percent Change (D) ((C/A)*100)
Type of Disability	0351	Former Student with a Disability	951	933	114	24%
Type of Disability	PS	Preschool Disability	1,048	872	-171	-16%
Type of Disability	SA	School Age Disability	2,084	2,024	-70	1%
L2RPT Eligibility	0221	L2RPT Eligible	2,620	2,397	98	2%
L2RPT Eligibility	0222	Former L2RPT Student	553	522	-14	-3%
L2RPT Programs	5676	Bilingual Program	1,028	1,028	0	0%
L2RPT Programs	5687	Two-way Bilingual Education Program	182	182	-20	-11%
L2RPT Programs	5688	L2RPT - Other Programs	222	228	-408	96%
L2RPT Programs	5709	English as a Second Language	1,238	1,800	562	45%
L2RPT Programs	8239	L2RPT Eligible but not in a L2RPT Program	252	532	-120	-16%
NCLB	0286	Title I - Part A: Improving Basic Programs (other than 5533)	33,948	0	-33,948	100%
NCLB	5533	Supplemental Services for Schools in Improvement Status under Title I	1,475	0	-1,475	100%
NCLB	5966	Title X - Part C: Homeless Education/Moroney-Wento	1,271	1,383	112	9%
NCLB	5720	Title III: Services to Non-Immigrant L2RPT Students	1,894	1,877	83	4%
NCLB	5731	Title III: Language Instruction Immigrant L2RPT Students	1,118	1,191	73	7%
NCLB	8327	Title I - Part D: Prevention and Intervention Programs for Children and Youth who are neglected	136	0	-136	100%
Other	0198	Poverty - from low-income family	28,862	30,620	642	2%
Other	0220	Eligible for Alternative Assessment	358	338	-18	-5%
Other	0242	Eligible to take the NYSESLAT for ELA Accountability	265	120	-95	-36%
Other	0264	Section 504 Plan	26	11	-25	-33%
Other	5753	Coordinated Early Intervening Services supported with IDEA funds	15,706	0	-15,706	100%
Other	5806	Reduced-Price Lunch Program	1,823	2,040	219	12%
Other	5817	Free Lunch Program	22,830	29,285	1,454	5%
Other	8272	Homeless Unaccompanied Youth Status	232	22	-201	86%
Safety Net	SN	Safety Net	26	11	-25	-31%
Summer School Participation	SSP	Summer School Participation	8,303	7,007	-997	7%
Prekindergarten Program	902	Universal Prekindergarten Program	0	2,204	2,204	100%

NYS-TEACHS 800-388-2014

37

# L2RPT Reasonableness Report - Student Detail

Cognos Viewer - Reasonableness Report - Detail

New York State Education Department

Reasonableness Report - Detail  
Data Contained in the Student Information Repository System

District Name: All Locations  
Location Name: All Locations  
School Year: 10 Jun 2012  
Date of Data Refresh: 5 May 2012

Category Type: Programs  
Category SubType: Other  
Selected Subgroup: Homeless Unaccompanied Youth Status

Location	Grade	Student	Student ID	NYSED ID	Entry Date	Exit Date	Exit Reason	Date of Birth	Gender	Ethnicity	Entry Date Grade 7	CTE or T/PEP	Program Intensity	Diploma	Post Graduate Plan
05					2011-09-10	8/12			M	B					
06					2011-09-29	8/12			M	B	2011-09-01				
11					2010-01-21	8/12			F	B	2009-09-01				
08					2010-09-19	8/12			F	B	2010-09-01				
07					2010-02-16	8/12			F	B	2010-09-01				
06					2010-06-30	8/12			M	B	2010-09-01				
09					2010-01-29	8/12			F	B	2010-09-01				
10					2010-06-12	8/12			M	B	2009-09-01				
11					2011-10-24	8/12			M	B	2009-09-01				
06					2010-02-23	8/12			F	B	2010-09-01				
11					2011-09-16	8/12			F	B	2009-09-01				
11					2010-02-07	8/12			M	B	2009-09-01				
11					2011-09-16	8/12			F	B	2009-09-01				
08					2010-06-26	8/12			M	B	2009-09-01				
10					2011-09-28	8/12			M	B	2009-09-01				
10					2010-02-14	8/12			F	B	2010-09-01				
11					2010-09-10	8/12			M	B	2009-09-01				
12					2011-12-12	8/12			M	B	2007-09-01				Other plan
12					2010-01-02	8/12			M	B	2009-09-01				

SIRS-401

NYS-TEACHS 800-388-2014

38

# L2RPT BEDS Enrollment Report

Cognos Viewer - SIRS-113 BEDS Day Enrollment Verification Report by Location of Enrollment & Student Subgroup

New York State Education Department

BEDS Day Enrollment Verification Report by Location of Enrollment & Student Subgroup  
Data Contained in the Student Information Repository System

District Name: District BEDS Total  
School Location: District BEDS Total  
School Year: 2011-12  
Finish

Reporting Date: BEDS Day October 5, 2011  
Data Refresh Date: 21 Apr 2012

Student Subgroup (accountability subgroups are marked with an asterisk [*])	Total (WEL, UG)	Pre-Kindergarten (half-day)	Pre-Kindergarten (full-day)	Kindergarten (half-day)	Kindergarten (full-day)	Grade 1	Grade 2	Grade 3	Grade 4	Grade 5	Grade 6	BEDS DAY ENROLLMENT									
												Ungraded Elementary (UG)	Grade 7	Grade 8	Grade 9	Grade 10	Grade 11	Grade 12	Ungraded Secondary (UGS)		
<b>All Students</b>	<b>32,329</b>	<b>1,680</b>	<b>100</b>	<b>0</b>	<b>2,591</b>	<b>2,487</b>	<b>2,415</b>	<b>2,438</b>	<b>2,359</b>	<b>2,212</b>	<b>2,231</b>	<b>101</b>	<b>2,245</b>	<b>2,153</b>	<b>2,007</b>	<b>2,272</b>	<b>1,700</b>	<b>3,221</b>	<b>184</b>		
Female	15,570	819	77	0	1,289	1,222	1,129	1,136	1,120	1,102	1,027	59	1,073	1,083	1,003	1,128	852	159	79		
Male	20,256	861	23	0	1,302	1,265	1,286	1,222	1,239	1,110	1,204	42	1,172	1,070	1,004	1,144	848	2,022	105		
American Indian/Alaska Native	0	0	0	0	0	0	0	0	0	0	0	0	0	0	0	0	0	0	0		
Black	25,120	1,085	98	1	1,478	1,363	1,310	1,409	1,471	1,300	1,420	39	1,391	1,279	1,170	1,451	1,096	1,582	108		
Hispanic	2,217	262	23	0	359	341	375	447	381	322	329	28	359	327	312	319	261	276	25		
Asian/Pacific Islander	1,462	17	0	0	27	34	31	61	54	42	41	7	47	76	102	81	36	16	0		
White	3,523	293	1	0	287	282	252	228	228	228	222	12	228	228	221	211	211	187	26		
Unknown	10	2	0	0	0	0	0	0	0	0	0	0	0	0	0	0	0	0	0		
General Education Students	26,578	1,472	121	0	2,211	2,102	2,023	2,041	1,923	1,862	1,823	0	1,781	1,727	1,603	1,873	1,451	1,518	0		
Students with Disabilities	1,750	208	79	0	380	385	392	397	436	350	408	101	464	426	404	400	249	703	184		
Former Students with Disabilities	112	12	1	0	15	22	22	26	37	32	21	0	29	29	19	22	12	12	0		
Not Limited English Proficient	26,514	1,460	100	0	2,200	2,080	2,002	2,112	2,000	1,822	1,804	0	1,752	1,650	1,503	1,851	1,439	1,518	0		
Limited English Proficient	1,512	0	0	0	281	285	313	326	337	329	327	101	417	403	504	420	249	163	184		
Formerly Limited English Proficient	263	0	0	0	0	0	0	0	0	0	0	0	0	0	0	0	0	0	0		
Economically Disadvantaged	26,287	1,511	100	0	2,187	2,072	1,994	2,011	1,911	1,801	1,800	0	1,753	1,670	1,523	1,821	1,401	1,518	0		
Not Economically Disadvantaged	1,542	169	0	0	304	315	321	327	348	310	331	101	417	403	504	420	249	163	184		
Migrant	0	0	0	0	0	0	0	0	0	0	0	0	0	0	0	0	0	0	0		
Not Migrant	26,287	1,511	100	0	2,187	2,072	1,994	2,011	1,911	1,801	1,800	0	1,753	1,670	1,523	1,821	1,401	1,518	0		

This report includes counts of students reported as SIRS as enrolled in this school on BEDS day 2011-12. This enrollment count includes enrolled students who reside in this district as well as students who reside in other school districts but are enrolled in this school.  
Students with the following beginning enrollment codes in SIRS are included: 0611 (Enrollment in building or grade); 0022 (Foreign Exchange Student); 5544 (Transferred under NCLB Title I, School in Improvement Status); 7000 (Transferred under NCLB, Paraprofessional (Emergency School)); 7011 (Transferred under NCLB, Victim of a Serious Violent Incident).

SIRS-113 Summary  
8 May 2012

© 2011 New York State Education Department

11:03:43

NYS-TEACHS 800-388-2014

39

## L2RPT BEDS Enrollment Report – Student Detail

Data Contained in the Student Information Repository System

District Name/Code: District BEDS Total  
 School Location: District BEDS Total  
 School Year: 2011-12  
 Reporting Date: BEDS Day October 5, 2011  
 Data Refresh Date: 21 Apr 2012  
 Student Subgroup: Black

Student ID	NYSSIS ID	Student	Location	District of Residence	Grade	Gender	Ethnicity	Economically Disadvantaged	LEP Eligible	Former LEP	Disability Status	Migrant	Homeless
					09	Male	Black or African American						
					09	Male	Black or African American	YES					
					09	Male	Black or African American	YES	YES				
					09	Male	Black or African American	YES					
					09	Male	Black or African American	YES					
					09	Male	Black or African American	YES					YES

NYS-TEACHS 800-388-2014

40

## Review: Data Reporting in SIRS

- Data on students experiencing homelessness are collected in the Student Information Repository System
- All students experiencing homelessness must receive a Homeless Indicator (Y) and Primary Nighttime Residence Code.
- Unaccompanied Youth should receive Program Service Code 8272.
- Students served by a McKinney-Vento Grant should receive Program Service Code 5566.
- Level 2 reports should be run to ensure data accuracy.

NYS-TEACHS 800-388-2014

41



## Survey for M-V Funded LEAs

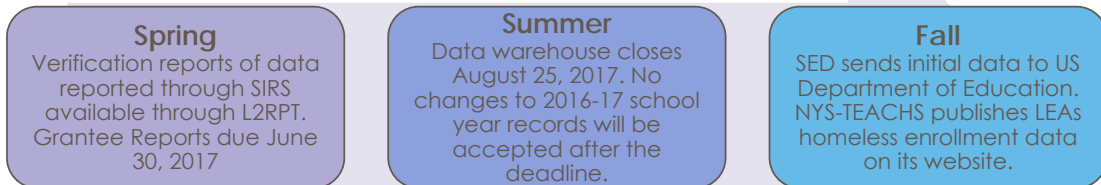
Activities, Indicators, and Outcomes	<ul style="list-style-type: none"> <li>Types of services provided by LEA through McKinney-Vento funding and the outcomes of those services.</li> </ul>
Internal/External Collaborations	<ul style="list-style-type: none"> <li>Information about collaborating programs</li> </ul>
School Stability	<ul style="list-style-type: none"> <li>Self-reported data on school stability</li> </ul>
Young Children Served	<ul style="list-style-type: none"> <li>See next slide</li> </ul>
<i>Additional Reporting for Enhanced Grantees</i>	<ul style="list-style-type: none"> <li><b>Year 1 Progress and Plan for Year 2</b> related to trauma-sensitivity training, policies, and practices</li> </ul>

## Survey for M-V Funded LEAs

<p><b>Birth-2 Year-Olds</b></p> <p><b>3-5 Year-Olds</b> (not pre-k or kindergarten or CPSE) <b>SERVED</b></p>	<ul style="list-style-type: none"> <li>Young children and preschoolers not in SIRS</li> <li>Served includes direct services and indirect services</li> <li>Count children regardless of whether they're enrolled in preschool program operated by an LEA</li> </ul>
<p><b>3-5 Year-Olds</b> (not pre-k or kindergarten or CPSE) <b>SERVED <u>and</u> migratory children</b></p>	<ul style="list-style-type: none"> <li>Same as 3-5 yr old served PLUS</li> <li>Approved for a Certificate of Eligibility under the Migrant Education Program.</li> </ul>
<p><b>3-5 Year-Olds</b> (not pre-k or kindergarten or CPSE) <b>SERVED <u>and</u> LEP</b></p>	<ul style="list-style-type: none"> <li>Same as 3-5 yr old served PLUS</li> <li>Limited English Proficient children enrolled or preparing to enroll in elementary school.</li> </ul>

# Timeline for Data Reporting

Timeline is approximate and subject to change.



## NYS-TEACHS

800-388-2014  
[info@nysteachs.org](mailto:info@nysteachs.org)  
[www.nysteachs.org](http://www.nysteachs.org)



## Information and Reporting Services, NYSED

518-474-7965  
[datasupport@nysed.gov](mailto:datasupport@nysed.gov)  
[www.p12.nysed.gov/irs/](http://www.p12.nysed.gov/irs/)

